

Community Benefit Report 2022

Health System



Continuing Our Legacy of Excellence in Health Care

From our founding in 1902 to 2022, when we were recognized as one of the top 15 health systems in the nation for the ninth consecutive year, St. Luke's has always been a leader in quality care and a dedicated community partner.

As Idaho's only locally based, not-for-profit, community owned and led health system, we are committed to providing all patients with the highest quality health care, regardless of their ability to pay.

merative
15 Top
Health
Systems
2022



Supported by amazing community partners, visionary board members and a highly dedicated team, St. Luke's delivers on its mission with care and compassion, and I'm proud and grateful to be part of that.

– Chris Roth, St. Luke's President and CEO



Recognizing a significant need in Idaho, St. Luke's has convened community conversations with mental health experts and youth across our service areas, invested in partner organizations—including providing clinical expertise and financial support to open the Idaho Youth Ranch's residential treatment center—and created bilingual suicide prevention as well as emotional, mental and behavioral health support resource guides.



Our Community Health Needs Assessments identified food and nutrition security as primary needs in all our service communities. Fortunately, St. Luke's grants have provided cooking classes, prepared meals and healthy foods and snacks for children through senior-age community members across our communities.

At a Glance: Caring for Our Communities in 2022

St. Luke's primary service area is Ada County, with our secondary service area covering southwest and south-central Idaho, eastern Oregon and northern Nevada. The numbers below provide a broad overview of the rich benefits St. Luke's provides to local communities in these counties: Ada, Blaine, Canyon, Elmore, Jerome, Twin Falls and Valley. Please note that community benefits provided outside these counties is not captured in this data. All numbers are current as of the fiscal year ending Sept. 30, 2022.



\$947 Million
Total Community
Benefit



\$27 Million
Charity Care



\$78 Million
Services and Programs for the
Community



\$17 Million
Donations Received

Community Needs Determination Process

St. Luke's community health efforts are directed by community needs assessments, St. Luke's community boards and community health managers. In 2022, St. Luke's published our most recent Community Health Needs Assessment, which is designed to help us better understand the most significant health challenges facing the individuals and families in our service areas.

Community Health and Engagement, in collaboration with internal and external stakeholders, is responsible for developing, implementing and maintaining optimal community health initiatives designed to address our communities' most significant health needs.



It is exciting to invest in solutions and relationships that solve multiple challenges in our community, allowing us to increase our reach and impact to improve lives.

*– Theresa McLeod, St. Luke's Administrator of
Community Health and Engagement*

Report of Community Benefits 2022

St. Luke's Elmore

St. Luke's Elmore is a critical access hospital serving Mountain Home and the large, rural areas of Elmore County. The former Elmore Medical Center was founded in 1955 and integrated with St. Luke's Health System in 2013. The hospital, area clinics and local providers are a vital part of this close-knit community, which includes Mountain Home Air Force Base.



\$ \$7.4 Million
Total Community Benefit



\$154,673
Donations Received



676
Volunteer Hours



34
Volunteers



275
Employees

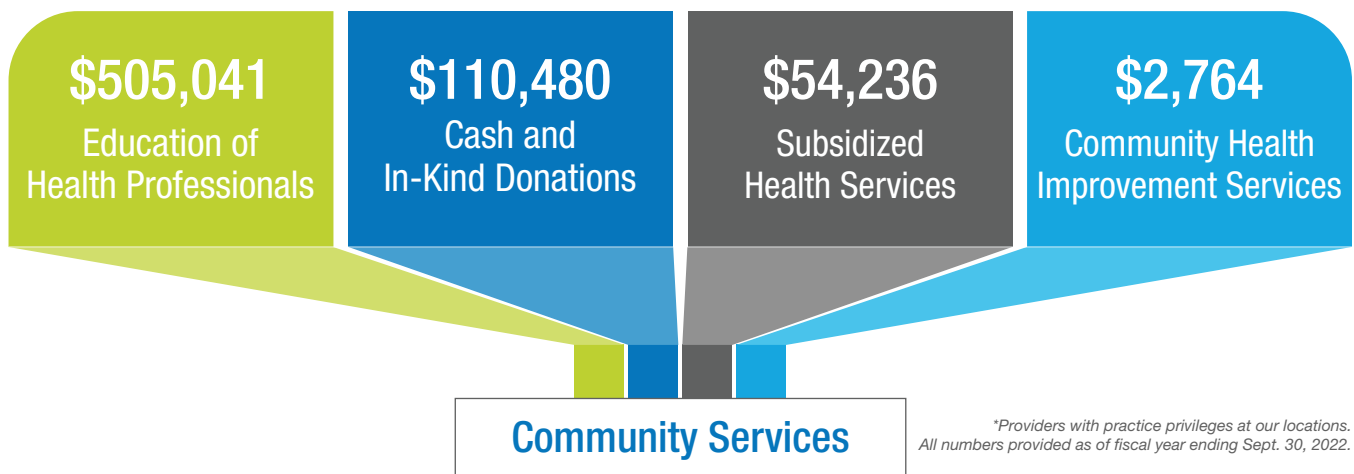


153
Physicians*

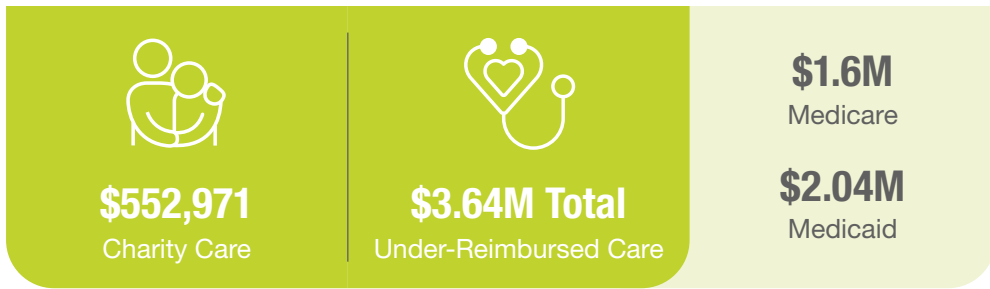


86
Advanced Practice Providers*

Providing a High Quality of Care



*Providers with practice privileges at our locations. All numbers provided as of fiscal year ending Sept. 30, 2022.



St. Luke's provides health care to eligible patients without charge or at a reduced rate, based upon a sliding scale derived from federal poverty guidelines.



We live in a wonderful community, and the team at St. Luke's Elmore, along with great local partners, is committed to keeping our kids and neighbors healthy and thriving.

– Lisa Melchiorre, St. Luke's Elmore Chief Operations Officer and Chief Nursing Officer



Report of Community Benefits 2022

St. Luke's Magic Valley

What began as Twin Falls County Hospital in 1918 has evolved into a state-of-the-art medical center and a vital member of the communities it serves, providing a full range of inpatient and outpatient services to the people of Twin Falls, southern Idaho and northern Nevada.



\$ 151.4 Million
Total Community Benefit



\$939,196
Donations Received



6,321
Volunteer Hours



35
Volunteers



2,805
Employees

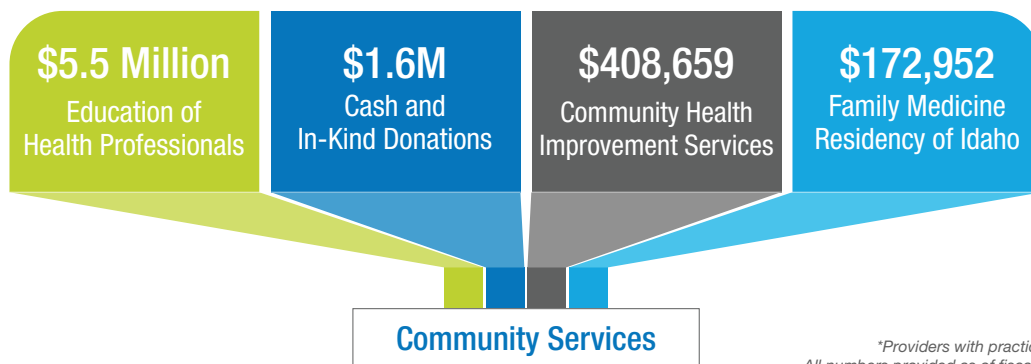


156
Advanced Practice Providers*

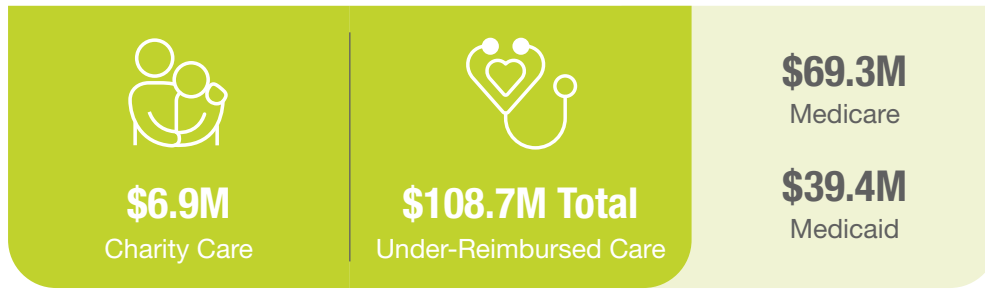


304
Physicians*

Providing a High Quality of Care



*Providers with practice privileges at our locations.
All numbers provided as of fiscal year ending Sept. 30, 2021.



The CARES Act authorized \$100 billion in funding to hospitals and other health care providers to be distributed through the Public Health and Social Services Emergency Fund (“Relief Funds”). St. Luke’s recognized government assistance revenue from Relief Funds for facilities in Twin Falls County in the amount of \$13,773,453 and \$634,414 for the years that ended September 30, 2022, and 2021, respectively. These relief funds were to compensate for revenue lost because of suspended elective procedures due to Covid-19. The unreimbursed, charity care and bad debt amounts disclosed in this report do not include this government assistance

St. Luke’s provides health care to eligible patients without charge or at a reduced rate, based upon a sliding scale derived from federal poverty guidelines. revenue.



“ St. Luke’s has been a phenomenal community partner, addressing the items that clearly fall under the scope of a health care provider and taking on the more challenging topics of community health. Their ability to convene community leaders has benefited the health and prosperity of the families we work with on a daily basis.

– Eva Craner, Twin Falls School District Public Relations Director and St. Luke’s Magic Valley Community Board Member ”

Improving Access to Patient-Centered Care

\$23.4 Million

Total Capital Improvements—One hundred percent of St. Luke’s revenue after expenses is reinvested into land, facilities, equipment and other capital supporting the hospital’s mission for Twin Falls County.

\$12.9 Million

Hospital Expansion—Expansion included renovations, remodel costs and new equipment to improve and expand our St. Luke’s Magic Valley Hospital, Jerome Hospital and clinics in Twin Falls and surrounding areas.

\$5.9 Million

Facility Upgrades—Equipment and upgrade costs to improve St. Luke’s Magic Valley Hospital, Jerome Hospital and clinics in Twin Falls and surrounding areas. These improvements to existing facilities will allow St. Luke’s to continue to meet the medical needs of the growing community.

\$4.6 Million

Technology—We continually upgrade key information technology infrastructure to boost efficiencies, lower costs and most importantly, improve safety and quality for patients.

Report of Community Benefits 2022

St. Luke's McCall

St. Luke's McCall is a critical access hospital and a leader in health and wellness promotion. Founded in 1956 as McCall Memorial Hospital, the medical center and clinics integrated with St. Luke's Health System in 2010.



\$ **\$32.1 Million**
Total Community Benefit



\$1.5 Million
Donations Received



584
Volunteer Hours



18
Volunteers



293
Employees



82
Physicians*

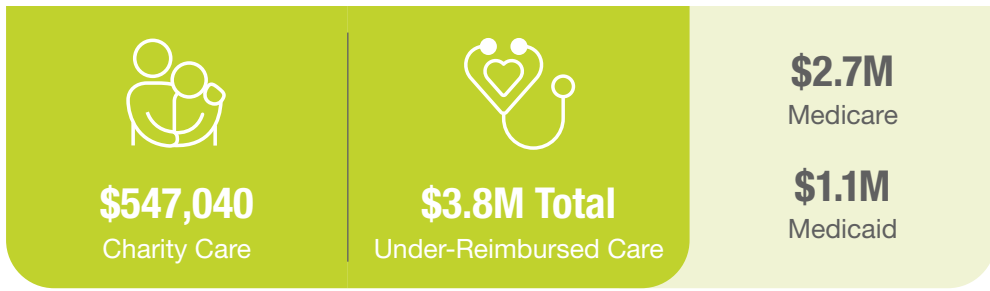


46
Advanced Practice Providers*

Providing a High Quality of Care



*Providers with practice privileges at our locations.
All numbers provided as of fiscal year ending Sept. 30, 2022.



St. Luke's provides health care to eligible patients without charge or at a reduced rate, based upon a sliding scale derived from federal poverty guidelines.



Through our collaboration with partners and members of our community, we increase the collective impact of our work. We truly are better together.

– Tiffany Dobbs, St. Luke's McCall Community Health Manager



Report of Community Benefits 2022

Treasure Valley

St. Luke's serves the growing cities of Boise, Meridian, Eagle and beyond. St. Luke's Boise is Idaho's largest health care provider, the flagship hospital of St. Luke's Health System and home to the state's only Children's Hospital. St. Luke's Meridian is a full-service medical center with the busiest Emergency Department in Idaho. Our Boise and Meridian hospitals and Treasure Valley clinics are Magnet-designated for nursing excellence.



\$675 Million
Total Community Benefit



\$11.3 Million
Donations Received



30,154
Volunteer Hours



1,150
Volunteers



10,835
Employees



983
Physicians*

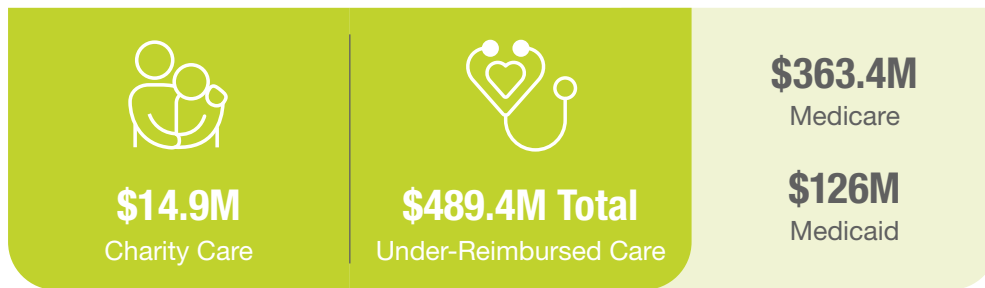


547
Advanced Practice Providers*

Providing a High Quality of Care



*Providers with practice privileges at our locations. All numbers provided as of fiscal year ending Sept. 30, 2022.



The CARES Act authorized \$100 billion in funding to hospitals and other health care providers to be distributed through the Public Health and Social Services Emergency Fund (“Relief Funds”). St. Luke’s recognized government assistance revenue from Relief Funds for facilities in Ada County in the amount of \$23,939,192 and \$36,145,669 for the years that ended September 30, 2022, and 2021, respectively. These relief funds were to compensate for revenue lost because of suspended elective procedures due to Covid-19. The unreimbursed, charity care and bad debt amounts disclosed in this report do not include this government assistance revenue.

St. Luke’s provides health care to eligible patients without charge or at a reduced rate, based upon a sliding scale derived from federal poverty guidelines.



We continue to invest in essential services, such as the Idaho Youth Ranch Residential Center for Healing and Resilience. We’ve needed it for some time. The referral relationship between St. Luke’s and the center will help youth in our community to receive needed care.

– Connie Sturdavant, St. Luke’s Director of Operations of Children’s Mental and Behavioral Health

Improving Access to Patient-Centered Care

\$113.6 Million

Total Capital Improvements—One hundred percent of St. Luke’s revenue after expenses is reinvested in the organization to serve the communities in southwestern Idaho and eastern Oregon in the form of staff, buildings or new technology.

\$16.9 Million

Downtown Boise Campus Development—We continued our investments in the architectural, planning and project costs related to updating the Boise Medical Center.

\$30.4 Million

Orthopedic and Specialty Facility—Development and construction of a new state-of-the-art orthopedic facility is underway at 27th Street and W. Fairview Avenue.

\$11.2 Million

Technology—We continually upgrade key information technology infrastructure to boost efficiencies, lower costs and most importantly, improve safety and quality for patients.

\$44 Million

Other Projects—We are dedicated to updating equipment and expanding our clinics and facilities to give patients the best quality of care.

Report of Community Benefits 2022

West Treasure Valley

Our commitment to Canyon County continues to grow with St. Luke's Nampa Medical Center, St. Luke's Fruitland Medical Plaza, and clinics throughout the county and in the Fruitland-Ontario area. We're a dedicated partner with area nonprofits, working together to improve the health of people in this rapidly growing and diverse region, from the more populated cities to smaller, more remote rural communities.



\$75.8 Million
Total Community Benefit



\$358,087
Donations Received



2,172
Volunteer Hours



14
Volunteers



1,125
Employees

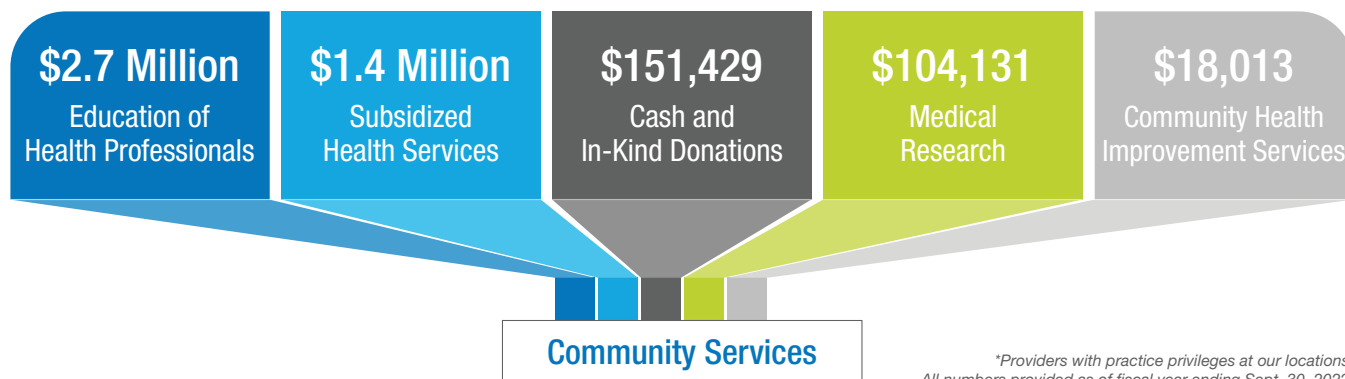


464
Physicians*

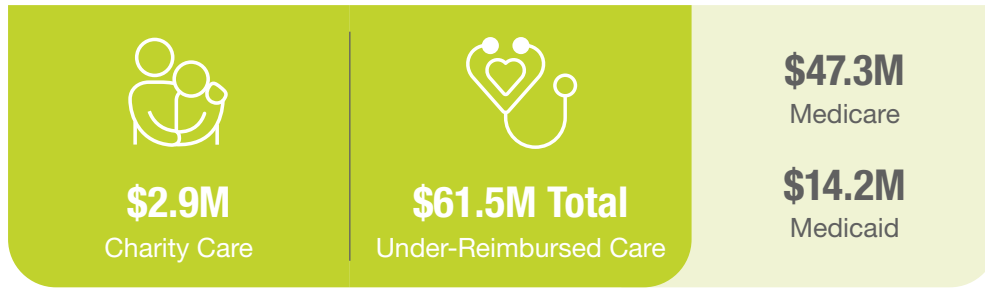


225
Advanced Practice Providers*

Providing a High Quality of Care



*Providers with practice privileges at our locations.
All numbers provided as of fiscal year ending Sept. 30, 2022.



The CARES Act authorized \$100 billion in funding to hospitals and other health care providers to be distributed through the Public Health and Social Services Emergency Fund (“Relief Funds”). St. Luke’s recognized government assistance revenue from Relief Funds for facilities in Canyon County in the amount of \$1,654,565 and \$3,801,214 for the years that ended September 30, 2022, and 2021, respectively. These relief funds were to compensate for revenue lost because of suspended elective procedures due to Covid-19. The unreimbursed, charity care and bad debt amounts disclosed in this report do not include this government assistance revenue.

St. Luke’s provides health care to eligible patients without charge or at a reduced rate, based upon a sliding scale derived from federal poverty guidelines.



St. Luke’s Nampa Medical Center continues to improve to meet the needs of our growing community. We achieved Trauma Level IV designation to keep more patients with traumatic injuries close to home and opened low-acuity rooms to decrease time in emergency care.

– Misty Robertson, St. Luke’s Nampa Chief Operations Officer and Chief Nursing Officer



Improving Access to Patient-Centered Care

\$4.9 Million

Total Capital Improvements—One hundred percent of St. Luke’s revenue after expenses is reinvested into land, facilities, equipment and other capital supporting the hospital’s mission for Canyon County.

\$1.9 Million

Nampa Campus Development—This campus expansion included inpatient services as well as additional outpatient services to continue to meet the health care needs of our growing community.

\$1.5 Million

Facilities Development—St. Luke’s investments to update, equip, and expand various other medical facilities and clinics throughout Canyon County.

\$1.5 Million

Technology—We continually upgrade key information technology infrastructure to boost efficiencies, lower costs and most importantly, improve safety and quality for patients.

Report of Community Benefits 2022

St. Luke's Wood River

St. Luke's Wood River Medical Center is a critical access hospital serving Blaine County and the surrounding region. It provides a broad range of advanced services for its size, including an Emergency Department staffed by board-certified emergency physicians, state-of-the-art surgical facilities and outpatient infusion services, including chemotherapy. A wide variety of primary and specialty care providers coordinate patient care in local clinics, along with a network of more than 150 physicians.



\$5 Million
Total Community Benefit



\$3.2 Million
Donations Received



10
Volunteer Hours



2
Volunteers



423
Employees

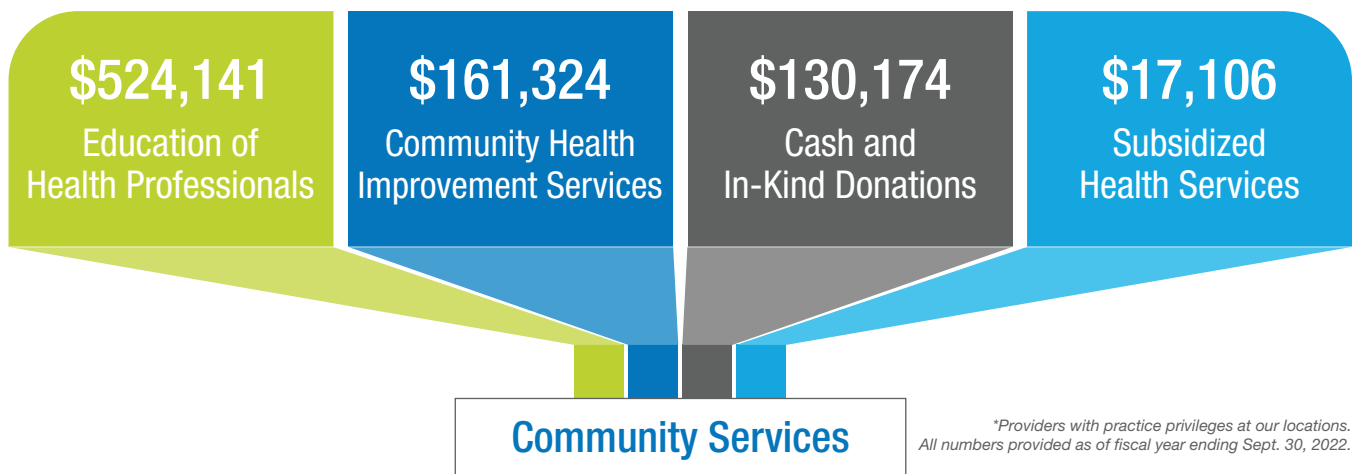


160
Physicians*

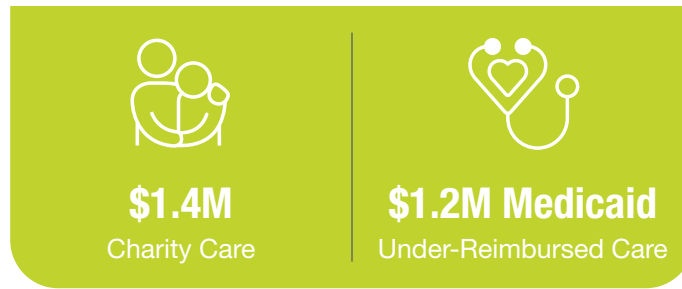


40
Advanced Practice Providers*

Providing a High Quality of Care



*Providers with practice privileges at our locations. All numbers provided as of fiscal year ending Sept. 30, 2022.



St. Luke's provides health care to eligible patients without charge or at a reduced rate, based upon a sliding scale derived from federal poverty guidelines.



“ St. Luke's provides grants that make community health outreach possible. For populations that have difficulty accessing care, bringing services such as vaccines to them makes it easier for them to maintain their health.

– Dr. Alejandro Necochea, St. Luke's Internal Medicine Provider and Medical Director of Community Health

”



Giving Thanks

Our work assessing and addressing community needs would not be possible without a visionary board of directors and our community boards. We are grateful for their partnership and guidance.

St. Luke's Health System Board of Directors as of Sept. 30, 2022:

Bob Lokken, Chair
Andrew Scoggin, Chair-Elect
Emily Baker
Brigette Bilyeu
Tom Corrick
Rosa Dávila
Lucie DiMaggio, MD
Mark Durcan
Lisa Grow
Allan Korn, MD
Dan Krahn
Jon Miller
Chris Roth, President/CEO
Rich Raimondi
Bill Whitacre

St. Luke's Elmore Community Board as of Sept. 30, 2022:

Paul Shrum, Chair
Brock Cherry
Connie Cruser, RN
Karen Galvan, MD
Bianca Garcia
James Gilbert
Richard Gorman
Jeff Jausoro, PharmD
Lloyd Knight
Jeff Lord
Mildred McNeal
Lisa Melchiorre, MS, RN, NEA-BC
Allen "Nix" Niksich
Connie Powers, LCSW
Dayana Rodriguez
Justin Smith, MD

St. Luke's Magic Valley/Jerome Community Board Members as of Sept. 30, 2022:

Dave Snelson, Chair
Arlen Blaylock
Melody Bowyer
Eva Craner
Don Hall
RoseAnna Holliday
Jill Howell
Brian Johnson, DO
Janet Olmstead
Julia Oxarango-Ingram
Blake Pedersen, DO
Edna Pierson
Travis Rothweiler
John Shine
Scott Standley
John Wright

St. Luke's McCall Community Board Members as of Sept. 30, 2022:

Robert Vosskuhler, MD, Chair
Juan Bonilla
Jill Calhoun
Sarah Covault
Eddie Droge, MD
Amber Green
Doug Irvine, MD
Patrick Kinney, MD
Dean Martens
Dawn Matus
Gary Thompson
Hon. Darla Williamson
Kurt Wolf
Aana Vannov

St. Luke's Treasure Valley Community Board Members as of Sept. 30, 2022:

Jon Larkin, Chair
Christina Bruce-Bennion
Alejandro Necochea, MD
Joelle Powers, PhD
Lisa Roberts
Robert Sanchez, PhD
Marle Shelton-Hoff
Nicole Thurston, MD
Jack Varin
Jill Wagers, DMD
Noreen Womack, MD

St. Luke's West Treasure Valley Community Board Members as of Sept. 30, 2022:

Andrew Rodriguez, Chair
Nikole Zogg, PhD, Chair-Elect
Ron Bitner
Evelyn Dame
Bill Deal
Jose DeLeon
Paul Lodge
Janet Komoto
Sarah Porter, MD
Misty Robertson
Timothy Sawyer, MD
Kim Stutzman, MD
Rachel Thomas, MD
Chris Veloz
Rick Youngblood

St. Luke's Wood River Community Board Members as of Sept. 30, 2022:

Eric Thomas, Chair
Erin Clark
Jim Foudy
Ben Holmes
George Kirk
Jeanne Liston
Julie Lyons, MD
Cynthia Murphy
Susan Parslow
Garry Pearson
Keith Perry
Bob Robideaux
Roger Sanger, DDS
Jeff Smith
Mary Williams

The information provided in this report is required by Idaho Code 63-602D, which states that 501(c)(3) hospitals having 150 or more beds must file a community benefit report with the Board of Equalization by Dec. 31 of each year. According to the code, the report is to include a description of the process the hospital has used to determine general community needs that align with the hospital's mission. In addition, the report shall include the hospital's amount of:

- Unreimbursed services for the prior year (charity care, bad debt, and under-reimbursed care covered through government programs).
- Donated time, funds, subsidies and in-kind services.
- Additions to capital such as physical plant and equipment.